



TANKS



PRODUCTS



SERVICES



ABOUT US

([about-melbourne-rotomould.html](#))



CONTACT US

([contact-melbourne-rotomould.html](#))

Water Tank Range

Tanks in the Melro range are supplied with an inlet strainer, overflow strainer and overflow connection installed as standard. Special purpose tanks may have different fitout options included.

A Melro tank is supplied with everything you need to hold water. Tanks up to 5500 litres come with a 25mm ball valve and multiple plugged outlets to suit most applications. Larger tanks are supplied with quality Australian made brass outlets and gate valves.



500 Round

Capacity - 500 Litres
Diameter - 825 mm
Total Height - 1166 mm
Inlet Height - 1166 mm
Colours ([water-tank-colours.html](#))
Fittings ([water-tank-fittings.html](#))



650 Round

Capacity - 650 Litres
Diameter - 700 mm
Total Height - 1850 mm
Inlet Height - 1850 mm
Colours ([water-tank-colours.html](#))
Fittings ([water-tank-fittings.html](#))



800 Round

Capacity - 800 Litres
Diameter - 800 mm
Total Height - 1775 mm
Inlet Height - 1775 mm
Colours ([water-tank-colours.html](#))
Fittings ([water-tank-fittings.html](#))

Drawing for Markup
(assets/pdf/500-litre-industrial-tank-
order-form.pdf)



1000 Round

Capacity - 1000 Litres
Diameter - 825 mm
Total Height - 2080 mm
Inlet Height - 2080 mm
Colours ([water-tank-colours.html](#))
Fittings ([water-tank-fittings.html](#))
Drawing for Markup
(assets/pdf/1000-litre-industrial-
tank-order-form.pdf)

Drawing for Markup
(assets/pdf/650-litre-industrial-tank-
order-form.pdf)



1600 Round

Capacity - 1600 Litres
Diameter - 1100 mm
Total Height - 1893 mm
Inlet Height - 1893 mm
Colours ([water-tank-colours.html](#))
Fittings ([water-tank-fittings.html](#))
Drawing for Markup
(assets/pdf/1600-litre-industrial-
tank-order-form.pdf)

Drawing for Markup
(assets/pdf/800-litre-industrial-tank-
order-form.pdf)



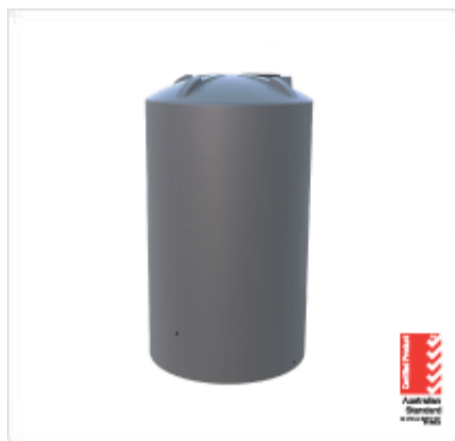
2100 Round

Capacity - 2100 Litres
Diameter - 1250 mm
Total Height - 1850 mm
Inlet Height - 1830 mm
Colours ([water-tank-colours.html](#))
Fittings ([water-tank-fittings.html](#))
Drawing for Markup
(assets/pdf/2100-litre-industrial-
tank-order-form.pdf)



2200 Squat Round

Capacity - 2200 Litres
Diameter - 1600 mm
Total Height - 1283 mm
Inlet Height - 1283 mm
Colours ([water-tank-colours.html](#))
Fittings ([water-tank-fittings.html](#))
Drawing for Markup
(assets/pdf/2200-litre-industrial-
tank-order-form.pdf)



2500 Round

Capacity - 2500 Litres
Diameter - 1250 mm
Total Height - 2195 mm
Inlet Height - 2175 mm
Colours ([water-tank-colours.html](#))
Fittings ([water-tank-fittings.html](#))
Drawing for Markup
(assets/pdf/2500-litre-industrial-
tank-order-form.pdf)



3500 Round

Capacity - 3500 Litres
Diameter - 1525 mm
Total Height - 2100 mm
Inlet Height - 2075 mm
Colours ([water-tank-colours.html](#))
Fittings ([water-tank-fittings.html](#))
Drawing for Markup
(assets/pdf/3500-litre-industrial-
tank-order-form.pdf)



4020 Round

Capacity - 4020 Litres
Diameter - 1660 mm
Total Height - 2120 mm
Inlet Height - 2100 mm



4500 Tall Round

Capacity - 4500 Litres
Diameter - 1250 mm
Total Height - 4005 mm
Inlet Height - 4005 mm



5500 Round

Capacity - 5500 Litres
Diameter - 2000 mm
Total Height - 2050 mm
Inlet Height - 2000 mm

Colours ([water-tank-colours.html](#))
Fittings ([water-tank-fittings.html](#))
Drawing for Markup
([assets/pdf/4020-litre-industrial-tank-order-form.pdf](#))



10100 Round

Capacity - 10100 Litres
Diameter - 2400 mm
Total Height - 2530 mm
Inlet Height - 2405 mm
Colours ([water-tank-colours.html](#))
Fittings ([water-tank-fittings.html](#))
Drawing for Markup
([assets/pdf/10100-litre-industrial-tank-order-form.pdf](#))

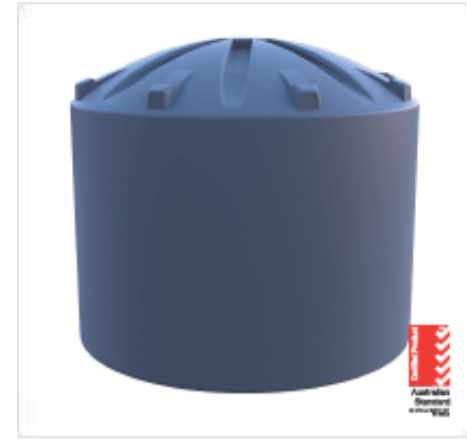
Colours ([water-tank-colours.html](#))
Fittings ([water-tank-fittings.html](#))
Drawing for Markup
([assets/pdf/4500-litre-industrial-tank-order-form.pdf](#))



16500 Round

Capacity - 16500 Litres
Diameter - 3100 mm
Total Height - 2500 mm
Inlet Height - 2416 mm
Colours ([water-tank-colours.html](#))
Fittings ([water-tank-fittings.html](#))
Drawing for Markup
([assets/pdf/16500-litre-industrial-tank-order-form.pdf](#))

Colours ([water-tank-colours.html](#))
Fittings ([water-tank-fittings.html](#))
Drawing for Markup
([assets/pdf/5500-litre-industrial-tank-order-form.pdf](#))



24000 Round

Capacity - 24000 Litres
Diameter - 3500 mm
Total Height - 3000 mm
Inlet Height - 2670 mm
Colours ([water-tank-colours.html](#))
Fittings ([water-tank-fittings.html](#))
Drawing for Markup
([assets/pdf/24000-litre-industrial-tank-order-form.pdf](#))



2000 Slimline

Capacity - 2000 Litres
Depth - 895 mm
Width - 1500 mm
Height - 2050 mm
Colours ([water-tank-colours.html](#))
Fittings ([water-tank-fittings.html](#))
Drawing for Markup
([assets/pdf/2000-litre-industrial-tank-order-form.pdf](#))



2007 Squat Slimline

Capacity - 2007 Litres
Depth - 912 mm
Width - 2895 mm
Height - 1150 mm
Colours ([water-tank-colours.html](#))
Fittings ([water-tank-fittings.html](#))
Drawing for Markup
([assets/pdf/2007-litre-industrial-squat-tank-order-form.pdf](#))



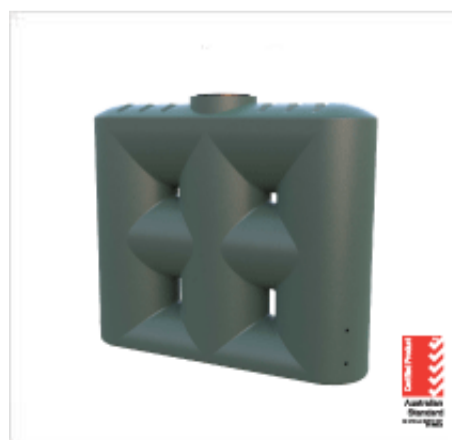
2008 Squat Slimline

Capacity - 2008 Litres
Depth - 550 mm
Width - 2400 mm
Height - 2150 mm
Colours ([water-tank-colours.html](#))
Fittings ([water-tank-fittings.html](#))
Drawing for Markup
([assets/pdf/2008-litre-industrial-tank-order-form.pdf](#))



2020 Slimline

Capacity - 2020 Litres
Depth - 640 mm
Width - 2170 mm



2030 Slimline

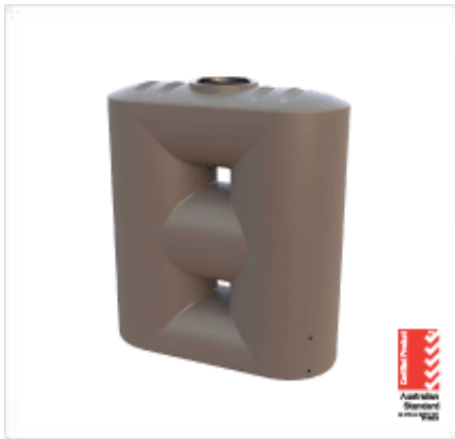
Capacity - 2030 Litres
Depth - 600 mm
Width - 2300 mm



2060 Slim with Integrated Pump

Capacity - 2060 Litres
Depth - 700 mm

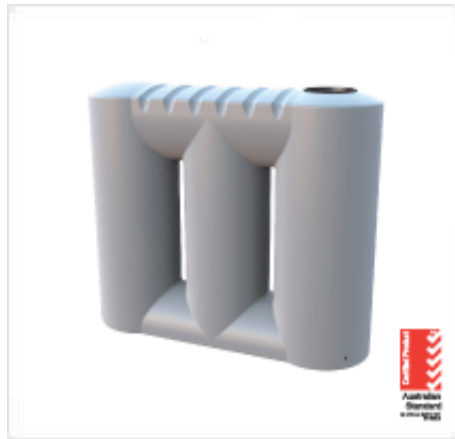
Height - 2100 mm
Colours ([water-tank-colours.html](#))
Fittings ([water-tank-fittings.html](#))
Drawing for Markup
([assets/pdf/2020-litre-industrial-tank-order-form.pdf](#))



2510 Slimline

Capacity - 2510 Litres
Depth - 800 mm
Width - 1900 mm
Height - 2150 mm
Colours ([water-tank-colours.html](#))
Fittings ([water-tank-fittings.html](#))
Drawing for Markup
([assets/pdf/2510-litre-industrial-tank-order-form.pdf](#))

Height - 2010 mm
Colours ([water-tank-colours.html](#))
Fittings ([water-tank-fittings.html](#))
Drawing for Markup
([assets/pdf/2030-litre-industrial-tank-order-form.pdf](#))



3000 Slimline

Capacity - 3000 Litres
Depth - 800 mm
Width - 2500 mm
Height - 2150 mm
Colours ([water-tank-colours.html](#))
Fittings ([water-tank-fittings.html](#))
Drawing for Markup
([assets/pdf/3000-litre-industrial-tank-order-form.pdf](#))

Width - 2000 mm
Height - 2050 mm
Colours ([water-tank-colours.html](#))
Flyer ([assets/pdf/melro-2060-tank-flyer.pdf](#))
Drawing for Markup
([assets/pdf/2060-litre-industrial-](#)



3007 Squat Slimline

Capacity - 3007 Litres
Depth - 912 mm
Width - 2896 mm
Height - 1650 mm
Colours ([water-tank-colours.html](#))
Fittings ([water-tank-fittings.html](#))
Drawing for Markup
([assets/pdf/3007-litre-industrial-tank-order-form.pdf](#))



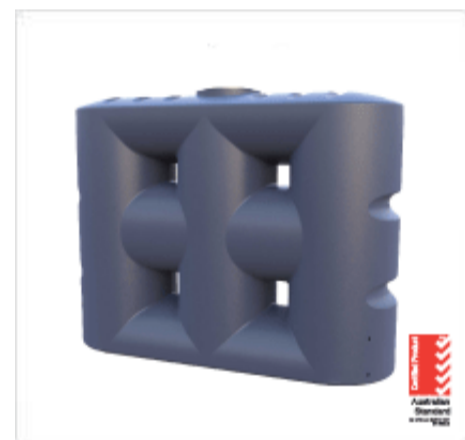
3060 Slim with Integrated Pump

Capacity - 3060 Litres
Depth - 700 mm
Width - 2900 mm
Height - 2040 mm
Colours ([water-tank-colours.html](#))
Flyer ([assets/pdf/melro-3060-tank-flyer.pdf](#))
Drawing for Markup
([assets/pdf/3060-litre-industrial-](#)



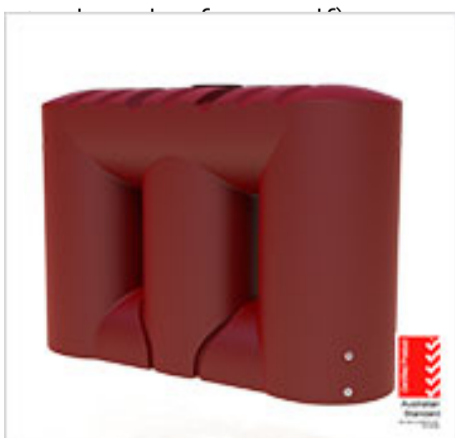
3100 Slimline

Capacity - 3100 Litres
Depth - 775 mm
Width - 2500 mm
Height - 2135 mm
Colours ([water-tank-colours.html](#))
Fittings ([water-tank-fittings.html](#))
Drawing for Markup
([assets/pdf/3100-litre-industrial-tank-order-form.pdf](#))



4000 Slimline

Capacity - 4000 Litres
Depth - 900 mm
Width - 2750 mm
Height - 2150 mm
Colours ([water-tank-colours.html](#))
Fittings ([water-tank-fittings.html](#))
Drawing for Markup
([assets/pdf/4000-litre-industrial-tank-order-form.pdf](#))



5000 Slimline

Capacity - 5000 Litres
Depth - 1020 mm



Cartage Tank

Capacity - 2000 Litres
Length - 1970 mm



Under Deck Tank

Capacity - 2000 Litres
Length - 2750 mm

Width - 3100 mm
Height - 2175 mm
Colours (water-tank-colours.html)
Fittings (water-tank-fittings.html)
Drawing for Markup
(assets/pdf/5000-litre-industrial-
tank-order-form.pdf)

Width - 1530 mm
Height - 955 mm
Colours (water-tank-colours.html)
Fittings (water-tank-fittings.html)

Width - 1200 mm
Height - 720 mm
Colours (water-tank-colours.html)
Fittings (water-tank-fittings.html)
Drawing for Markup
(assets/pdf/2000-litre-under-deck-
tank-order-form.pdf)

[RAINWATER TANK INSTALLATION & WARRANTY \(ASSETS/PDF/RAINWATER-TANK-INSTALLATION-WARRANTY.PDF\)](#)

[INDUSTRIAL TANK & CUSTOM FABRICATION WARRANTY \(ASSETS/PDF/INDUSTRIAL-TANK-AND-CUSTOM-FABRICATION-WARRANTY.PDF\)](#)

[↑ Back to top](#)

This site's images and content are protected by Australian
Copyright law.
All content remains the property of Melbourne Rotomould.